



## The Drive, Ilford, IG1 3HA

\*\*\* COUNCIL TAX, GAS, INTERNET, WATER BILLS INCLUDED IN RENT \*\*\*

Edward Chase is delighted to present to the residential lettings market this amazing 2 bedroom flat located in central Ilford. Positioned only 5 minutes from Ilford Station & Ilford High Road this flat will be an ideal home for professional couples or singles searching for size, comfort, and convenience. This flat has several key features such as: - Council tax, gas & water included - Two Double Bedrooms - Only electric bills to pay - Large open plan - Separate bedrooms - Double glazed windows - Tiled shower room - White goods included - Furnished or unfurnished - Newly refurbished - Digital thermostat - Local amenities - Easy access into central London To view this property please contact Edward Chase today. Edward Chase estate agents offer a bespoke, professional, ARLA accredited Lettings & Management service. If you would like a free property appraisal to gauge the rental potential of your property or you are considering a buy to let purchase, please feel

- Council Tax, Internet, Gas, Water bills Are Included In The Rental Amount, Leaving Only Electric To Pay
- Flat To Be Rented Furnished or Unfurnished
- This Flat Comes With Kitchen White Goods, Double Glazed Windows & Digital Thermostat For Gas Central Heating
- Large Two Double Bedroom Flat
- Property Located Near Ilford High Road & Only A 5 Minute Walk To Ilford Station (Overground) With Easy, Quick Access Into Central London
- Open Plan Kitchen Reception

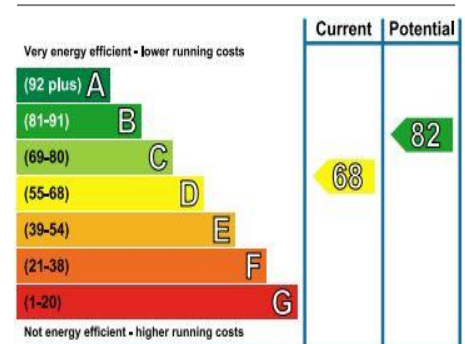
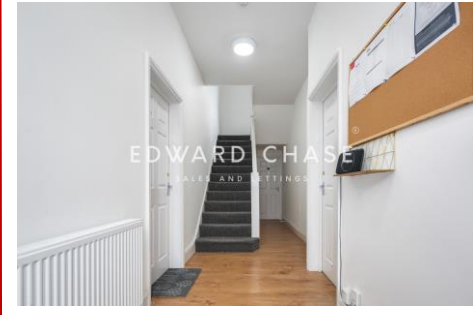
**Monthly Rental Of £1,149**

# The Drive, Ilford, IG1 3HA

Monthly Rental Of £1,149

\*\*\* COUNCIL TAX, GAS, INTERNET, WATER BILLS INCLUDED IN RENT  
\*\*\* Edward Chase is delighted to present to the residential lettings market this amazing 2 bedroom flat located in central Ilford. Positioned only 5 minutes from Ilford Station & Ilford High Road this flat will be an ideal home for professional couples or singles searching for size, comfort, and convenience. This flat has several key features such as: - Council tax, gas & water included - Two Double Bedrooms - Only electric bills to pay - Large open plan - Separate bedrooms - Double glazed windows - Tiled shower room - White goods included - Furnished or unfurnished - Newly refurbished - Digital thermostat - Local amenities - Easy access into central London To view this property please contact Edward Chase today. Edward Chase estate agents offer a bespoke, professional, ARLA accredited Lettings & Management service. If you would like a free property appraisal to gauge the rental potential of your property or you are considering a buy to let purchase,

please feel free to contact Sukhbir Basra, Branch Manager to arrange an appointment. Edward Chase estate agents specialize in Ilford, Redbridge, Seven Kings, Goodmayes, Chadwell Heath, Newbury Park, Barkingside, Chadwell Heath, Barking, Canary Wharf, Romford, Dagenham, Newham, Royal Wharf and the surrounding East London vicinity.



## MONEY LAUNDERING REGULATIONS 2003

Intending purchasers will be asked to produce identification and proof of financial status when an offer is received. We would ask for your co-operation in order that there will be no delay in agreeing the sale.